

EYEMOUTH HIGH SCHOOL



HOMework GUIDE FOR STUDENTS & PARENTS



S1 & S2

November 2010

Dear Student

This guide about homework contains useful information about a number of things:

- what is expected of you with your homework;
- what homework you can expect from your teachers in each subject;
- the help that is available in school to make the most of your homework;
- suggestions about how your parents might be able to help you.

Remember – homework is an important part of learning. You will have many different homework tasks as you will see from the information given in the booklet about the different subjects. All of these tasks are important – not just the ones where you have to write.

It is important that you always try your best with your homework. If you have a positive attitude to your work at home and at school you will always make progress in your learning.

The following suggestions should help you:

- Make use of your homework diary/ Study Planner.
- Be organised.
- Always seek help if you have difficulties.
- Present your homework as well as you can.
- Develop a study routine.
- Try out different ways of remembering information that are suggested by your subject teachers and that you have learned about in Social Education.

Remember – always try your best!

D Watson
Headteacher

Dear Parent

This guide about homework – which begins with our Homework Policy - contains what we hope you will find to be useful information about a number of things:

- what is expected of students with their homework;
- what homework your child can expect from teachers in each subject;
- the help that is available in school to help the students make the most of their homework;
- suggestions about how you as parents might be able to assist with homework.

If you have any queries or comments about the policy or about this guide, please do not hesitate to write to me at school. I will be delighted to hear from you.

If you have any general queries about your child's homework, please contact his/her Guidance Teacher. If you have any questions about the homework in a particular subject, please contact your child's subject teacher.

Yours sincerely

D Watson
Headteacher

Homework Policy

Eyemouth High School recognises the value of effective homework practice in successful learning.

- Homework plays an important role in helping students reach their full potential and should be regarded as “Learning out of school”.
- Homework enables students to consolidate their schoolwork and to develop study skills.
- Homework provides opportunities for students, parents and the school to work together.
- Homework should increase in both difficulty and amount per subject as students progress from first to sixth year.
- Homework tasks set should have a clear purpose that is understood by students and be geared towards the needs and ability of the student.



Students can expect to:

- Have the homework explained so the relevance of the task and its link to coursework is clearly seen.
- Be given challenging but not too difficult homework tasks.
- Be given the opportunity to enter their homework task in their Student Planner.
- Be given a minimum of four working days notice to complete the homework task.
- Have access to the necessary resources.
- Have access to help should this be required.
- Have written homework marked with relevant comments and constructive feedback and returned as soon as reasonably possible.

Types of homework

The type of homework given will vary according to the subject but may involve any of the following:

- **Learning by rote:** e.g. vocabulary and phrases; keywords; formulae; memorising information; information for tests and exams.
- **Reading:** Textbooks; novels and poetry; information sheets etc
- **Writing:** Answering set questions from sheets or textbooks; essay; redrafting work; completing past papers; taking notes etc.
- **Practising:** Musical instruments; keyboard skills; sport skills; drawing/painting/sketching.
- **Researching:** Using the library; preparing a talk; using the internet; conducting a survey; watching a TV programme etc.
- **Revising:** For exams; for a test; reading notes; vocabulary; taking notes.

Recommended number of Homework Hours

The maximum amount of homework per subject that a student should be expected to do each week is:

S1 - 30 minutes

S2 - 45 minutes



Students are expected to catch up on work missed through absence as soon as possible. This does not count as part of the subject's weekly time allocation of homework.

If a student has been absent for more than a week then they should consult with the teacher to look at ways of assisting them to catch up.

Student Responsibilities for handing in homework

The student is responsible for:

- Handing in well-presented homework.
- Handing homework in on time.
- Contacting the teacher if they are having difficulty in meeting the deadline.

Students are encouraged to attempt homework tasks well in advance of the deadline. Leaving homework until the night before it is due in is not an excuse.

If homework is not handed in appropriate action will be taken:

- Students who forget their homework will be given a "day's grace". Homework must be handed in by registration next day.
- Homework handed in after the "day's grace" will be recorded as late and a late slip sent home for signing.
- If a student has continuing problems with completing or submitting homework they will be spoken to individually and a course of action agreed. The course of action will be written down.



If a student still continues to have problems with completing or submitting homework then a letter will be sent home explaining the problem and the course of action previously agreed. A meeting with parents may be organised.

Support

If a student is having difficulty with homework many departments run voluntary homework help/study sessions.

Learning support staff can help with homework at the Lunch Club and with revision strategies through Core Studies or through students asking for help.

Parents

Parents can help their children by:

- Regularly checking that their child's Student Planner is being used properly.
- Encouraging their child to manage their time constructively so that a good routine is set up.
- Trying to provide suitable working conditions at home - a quiet area with appropriate space.
- Encouraging their child to attend homework help sessions or ask their teacher if they are having difficulty with the work set.
- Communicating with the school via the child's Guidance Teacher if there are any general queries which relate to homework or with the subject teacher for subject specific advice.



Art & Design

Types of homework set

- observational drawing.
- analytical drawing.
- collecting stimulus, eg. magazine cuttings, photos etc. to help generate ideas.
- written work - evaluating an artwork or researching an artist/artwork in response to a set of prompts.



How often

- S1/2 homework issued fortnightly.

How parents can help

- Many homework tasks are accompanied by a step-by-step guide to the task to help both student and parent.

The help that is available in school

- Thursday lunchtimes from 1:10 to 1:30pm.

Computing

Types of homework set

- Written questions.
- Reading.
- Researching.

How often

- This course is self paced learning. Students will take a homework sheet when they have covered a suitable amount of activities in class to enable them to complete the homework. There is an average of four homework activities per topic.

How parents can help

- Encourage them to hand the homework in on time.

The help that is available in school

- Help is available before/after school and at lunchtimes by arrangement with the student and class teacher.



English

Types of homework set

- All English students are encouraged to read literature as part of their homework. To encourage this as a good habit all S1 and S2 classes are taken to the library and are given reading time in class.
- S1 and S2 are provided with worksheets which support the work being done in class. These are issued approximately once a week.

How often

- English students are **never** without homework, reading is **always** encouraged. They are encouraged to read **for at least 20 minutes every day** at home.



How parents can help

- You can help your child by encouraging reading and making sure that quality time is given for this.
- Check and sign homework.
- Encourage the reading of a newspaper.

The help that is available in school

- Class teachers are always willing to help on an individual basis.

Geography

Types of homework set

Homework activities are varied to include:

- Differentiated written exercises (These may be provided in the form a homework exercise booklet).
- Learning set facts / information for assessment.
- Carrying out research.



How often

- Homework is set on a fortnightly basis.

How parents can help

Parental involvement is encouraged and can take the form of:

- Checking over written exercises.
- "testing" revision e.g. Short quiz.
- Encouraging their son / daughter to watch programmes with a Geography link e.g. "Planet Earth", reports on earthquakes / volcanoes, certain "survival-type" programmes.

The help that is available in school

Departmental support is provided as follows:

- Clear details are given of work being set. These are always in written form.
- Tasks are read through in class to ensure understanding.
- Help is available at any relevant class time, before registration or by arrangement with the class teacher.

German

Types of homework set and how often:

- Learning vocabulary is a vital part of this process, especially in S1-S3.
- Other tasks include reading a text in German with questions in English, translation and some research;
- Homework is generally set weekly;
- A lot of revision for tests must be completed at home because a lot of practice is required over a sustained period if the student is to be as successful as possible. This applies especially to speaking and writing tests;
- Students are encouraged to access the internet to view topics of interest in the foreign language. They are also encouraged to view DVDs with the language changed to French/German, with subtitles in English. These activities allow them to enhance their knowledge, but also are just to have some fun in the foreign language!
- Homework is differentiated whenever this is appropriate.

S1

- On average 5 pieces of homework per unit of work, including vocabulary tests and at least 2 pieces of reading/writing or translating homework.
- In addition, intensive revision for tests, especially for speaking and writing tests. At least 15-20 minutes each night in the week before tests is recommended.

S2

- As per S1.

How parents can help

- Ensure there is a quiet place to work;
- Stress that vocabulary learning is a very important homework task;
- Encourage their sons/daughters to speak to the class teacher **well before** the homework due date if there is a problem/query/concern. Students are always given 1 week's notice to complete tasks.
- Provide their sons/daughters with a German dictionary at home.
- Check homework planners every evening.



The help that is available in school

- Homework help is available on Wednesdays at 1.10pm in the Modern Languages Department, but it is also often arranged, at a mutually convenient time, between individuals and their class teacher. This may be at interval, lunchtime or after school, where this is possible.
- The Modern Languages Department encourages students to take responsibility for their learning and to approach their teacher for help and/or support as they require it.
- The school library has a selection of German dictionaries for reference.

History

Types of homework set

- Reading.
- Writing.
- Research.
- Revision.
- Completing classwork.



How often

- Fortnightly.

How parents can help

- Take an interest in what your child is studying.
- Question them about their learning - prior to tests.
- Encourage them to read beyond what is set by the department.
- Encourage them to use the library and internet to further their knowledge.

The help that is available in school

- All year groups - by arrangement with their History teacher.

Home Economics

Types of homework set and how often

- Preparation for practical cookery lessons - students given recipe in advance and asked to read through the recipe and to identify, with the use of Word Banks, cookery skills, food preparation techniques etc.

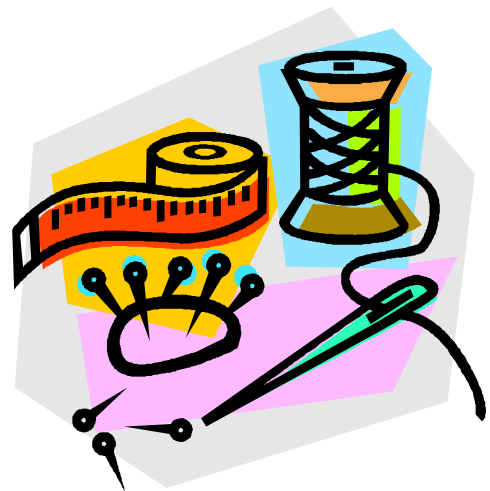


How parents can help

- Parents can encourage students to use the Fact File, read recipes and make use of word banks.

The help that is available in school

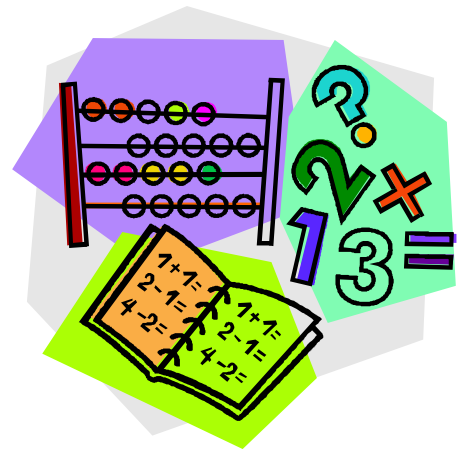
- Every Thursday lunchtime the department will be open to S1/2 students with a member of staff present to help with the following:
 - Homework help.
 - Catch up with work due to absences or music tuition or guidance interviews etc.
 - Somewhere to eat their packed lunch.
 - Browse through recipe books etc.
 - Complete craft work.



Mathematics

Types of homework set

- Homework sheets to be completed at the end of each topic.
- Revision sheets.
- Numeracy worksheets.
- Complete class work (for students who have wasted class time).
- Individual revision for tests - learning vocabulary learning formulae and processes.



How often

- Every week.

How parents can help

- As a department we encourage parents to help students with their homework, and if there are difficulties or questions - parents should feel free to contact their child's teacher.
- There are links to web sites from the school home page.

The help that is available in school

- There is a supported study session that runs after school each Thursday for **any** student who wishes to attend. They can receive help with any aspect of their homework or classwork. If this is not suitable they should make alternate arrangements with their class teacher.

Modern Studies



Type of homework set

- Watching news programmes.
- Reading newspapers and collecting news articles on issues related to topics being studied in school.
- Undertaking personal research on topics.
- Revision for assessments by producing mind maps and making revision cards.

How often

- Homework will be issued at least once a week.
- The amount of homework expected should be between 30-45 minutes.
- Students who are absent for what ever reason, are expected to catch up on the work missed.

How parents can help

- Take an interest in what your son or daughter is studying.
- Question them about their learning.
- Encourage them to watch news programmes and read newspapers and magazines.
- Encourage them to use the Library and internet to further their knowledge.

Help that is available:

- Students should make contact with their Modern Studies teacher in advance of the due date if they have any difficulty.
- Access to computers and help will be available during lunchtimes and after school if required.
- Should any parents have concerns about their son or daughter's homework then they should make contact with their Modern Studies teacher to discuss this.

Physical Education

Types of homework set and how often

- No formal homework is given though students may be asked to undertake extra practice at home to assist in improving their performance.



- We also encourage all students to seek ways of achieving one hour of exercise per day.

How parents can help

- You can encourage your son/daughter by helping them practice or complete one hour of physical activity per day.



Religious and Moral Education



S1

- The types of homework set
 - Researching: e.g. asking questions at home and reporting back on the kinds of responses given; finding out why people support charities.
 - Revising: e.g. revision worksheet prior to assessment.
- The frequency with which it is set
 - Every five or six lessons (four times per term).
- How parents can help their children
 - Listen and talk with your children about ideas and values.
- The help that is available in school
 - Help is available in the Department by appointment at interval, lunch or after school.

S2

- The types of homework set
 - Revising: eg revision worksheet prior to assessment.
 - Researching: eg conducting a short survey of opinions at home and reporting back.
 - Creative writing, drawing or making: eg design a tool to pick up paperclips, giving illustrated plan or demonstration model.
- How often
 - Every five or six lessons (twice per term).
- How parents can help
 - Listen and talk with your children about issues and values. Encourage them to understand different view points and to give reasons for their opinions.
- The help that is available in school

Help is available in the Department by appointment at interval, lunch or after school.

Science

Types of homework set

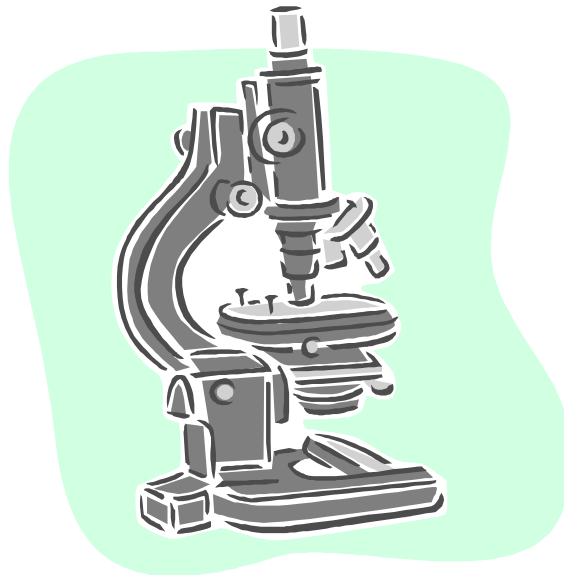
Homework tasks may include the following:

- Written tasks from question sheets.
- Written tasks from resource books.
- Learning tasks e.g. Keywords.
- Researching a particular topic.
- Preparing a presentation.
- Revision for assessment.

In addition students are expected to use their resource books and their jotters to read about the work they are doing.

How often

- Regular homework will be set – often weekly.
- Homework should occupy about 30 minutes per week for S1 and 45 minutes per week for S2. Extra time will be required when revising for examination.



How parents can help

- Ensure that the resource books are used.
- Check that all homework has been neatly done.
- Look at the marks gained in homework and tests and praise good or improved performance.
- Help students to learn by asking questions using summaries, Key Words, etc.
- Contact Mr Macdonald if you have serious concerns – do not wait until the next parents' night.

The help that is available in school

- All members of staff encourage students to complete homework early and to seek help from the teacher if having difficulties.
- Homework help sessions are available at lunchtimes. Details of times and rooms are posted in the science corridor.
- All science teachers are available to help students with their homework if asked to do so.
- In addition help is available every morning before school in science rooms 02 and 05.
- Students have exclusive access to two resource books to help them with their work. Teachers encourage students to take these books home to use.
- Use of the school library is encouraged. The librarian will be pleased to help students in their research. The computers in the library are available to all students and access time can be booked.

Technical

S1

Types of homework set

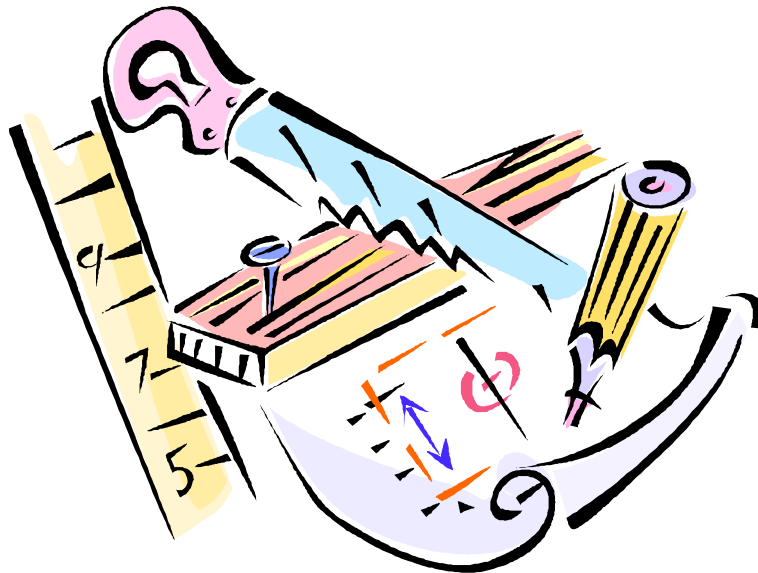
- Students are given a graphics design task in which they have to manipulate shapes into object. This reinforces graphics skills taught in class and encourages students to be creative.

How often

- Weekly for approximately seven weeks.

How parents can help

- Students are encouraged to seek ideas from their parents/ other family members. It is expected all graphics work is their own.



The help that is available in school

- Students, can come along during Friday lunchtime to use equipment in the department or to seek further help with ideas. I operate an open door policy for S1 students.

S2

Types of homework set.

- When undertaking design/ graphics work, students are set two types of homework:
 - Research, in which they have to source ideas for projects, find sizes of rooms/ furniture etc, find information on subject matter.
 - Graphics, in which they produce a variety of sketches/ drawings using the techniques they have been shown in class.

How often

- On a weekly basis during specific project work.

How parents can help their children.

- We encourage students to seek help from parents with the Research aspect of the homework.

The help that is available.

- As with S1, I operate an open door policy.